

Dear Friends of LDA,

We honored longevity, celebrated new beginnings, and explored and planned our future over the course of fiscal year 2014. LDA's longtime Executive Director Kitty Christiansen retired after 30 years at the helm of the organization. Many friends, family and colleagues joined us in October to recognize her contributions to the community and the organization.

We also took time to celebrate new additions and beginnings at LDA. As LDA's new executive director, I focused on organizing a team with several new staff and board members who bring fresh perspectives and new expertise to LDA. Together, we concentrated on delivering quality, effective services for our students and families and celebrated their successes.

We also took time, with the help of dotorg, a local nonprofit consulting firm, to explore and plan for LDA's future. Our strategic planning encompassed a broad range of information, community trends, current research, and national issues that affect the lives of those with LD & ADHD. We examined our values, our mission and our vision for the future.

The vision of LDA Minnesota is that all individuals are supported and empowered to learn.

Thank you for your ongoing support of our work. I hope that LDA's work and vision continues to inspire and support you as a lifelong learner.



Warmest Regards,
Martha Moriarty
Executive Director

Financial Position

Assets

Cash	\$586,553
Pledges, Receivables, Prepaid Expenses	\$138,842
Property and equipment, net	\$1,303,204
Total Assets	\$2,028,599

Current Liabilities

Accounts Payable, Accrued Expenses	\$39,988
Long-term Debt	\$745,610
Total Liabilities	\$785,598

Net Assets or Fund Balances

Unrestricted Net Assets	\$1,043,001
Temporarily Restricted Net Assets	\$200,000
Total Net Assets	\$1,243,001

Total Liabilities and Net Assets	\$2,028,599
---	--------------------

Fiscal Year 2014 Revenue & Expenses

Support & Revenues

Fees for Service	\$119,116
Government Grants & Contracts	\$282,215
Contributions & Public Support	\$387,763
Interest income	\$477
Total Support & Revenue	\$789,571

Program Expenses

Learning Connections Program	\$448,854
Instructional & Support Services	\$117,161
Assessment Services	\$94,733

Supporting Activity Expenses

Administration	\$50,563
Fundraising	\$61,768
Total Expenses	\$773,079

Net Change in Assets	\$16,492
-----------------------------	-----------------

The mission of LDA Minnesota is to help individuals with learning difficulties **Learn** successfully, **Dream** of possibilities, and **Achieve** their goals.

Program Results



Learning Connections – provides intensive reading, writing and math instruction for low-income children and youth, resources for classroom teachers, and support for their parents. In **FY2014**, the **Learning Connections** program enrolled 593 students; for the **303** students who had two benchmark data points, 95% (289 of 303) showed positive growth in their reading or math skills; 63% (191 of 303) made more than one year of growth, effectively narrowing their achievement gaps.

Assessment and Tutoring Services – includes diagnostic assessments; individual consultations; and individualized tutoring to assist children, youth, and adults in improving their learning strategies and skills to meet their academic, vocational, and personal goals. LDA provided individualized services to **84** assessment and tutoring clients during **FY2014**; **100%** of assessment clients who responded to a survey reported that the assessment provided new information or skills, thus increasing life opportunities.

ADHD Support Services – include monthly support groups, ADHD symposia, focused workshops, and other consultations. In **FY2014**, **444** adults gained skills and resources to better manage their challenges and achieve their academic, vocational, and personal goals. Ninety-three percent (**93%**) of symposium attendees reported gaining useful knowledge or strategies.

Transition Services – helps high school youth and young adults in post-secondary or work environments plan and implement successful transitions from high school to the world of work or post-secondary education. During 2013-2014, LDA delivered a pilot program at Bethel University to **12** students in collaboration with the Autism Society of Minnesota.

Learning Disabilities Association, Inc.
Form 990, Part III, Line 4d – Other

Form 990, Part VI, Line 11b – Form 990 Review Process

Form 990 is reviewed and approved by the Finance Committee, and then presented to the Board for approval prior to filing.

Form 990 Part VI, Line 12c – Explanation of Monitoring and Enforcement of Conflicts Policy is reviewed at least annually with each Board member and employee.

Form 990, Part VI, Line 19 – Other Organization Document Publicly Available

Financial statements, governing documents, and conflict of interest policy are available upon request.

Board of Directors 2014

PRESIDENT
Willie Johnson

VICE PRESIDENT
W. Brooks Donald, MD

SECRETARY
Lindsay Hopkins

TREASURER
Jeff Fox

PAST PRESIDENT
John Sweeney

DIRECTOR
Dan Haugen

DIRECTOR
Kimberly Hicks

DIRECTOR
Sherry Holtz

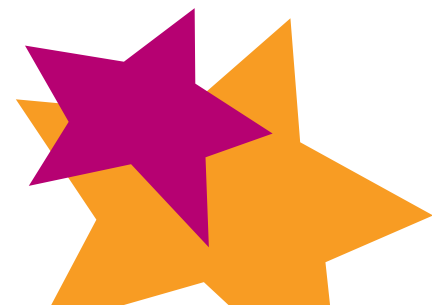
DIRECTOR
Kim Kang

DIRECTOR
Marc Markell

DIRECTOR
Cynthia Peterson

DIRECTOR
Keith Swanson

EXEC DIRECTOR
Martha Moriarty



Gifts to LDA Minnesota

Foundation Builders

\$100,000+

Greater Twin Cities United Way

Leaders

\$25,000 - \$99,000

F.R. Bigelow Foundation
Foundation for Educational
Research & Development
Minnesota Office of Higher
Education (Intervention for
College Attendance Program)
Otto Bremer Foundation
The Saint Paul Foundation

Investors

\$10,000 - \$24,999

Andersen Corporate Foundation
Fred C. and Katherine B.
Andersen Foundation
Beim Foundation
Best Buy Foundation
Deluxe Corporation Foundation
David Larson
Thrivent Financial for
Lutherans Foundation

Partners

\$5,000 - \$9,999

The Hugh J. Anderson
Foundation
Jeff & Mary Fox
Margaret Rivers Fund
Securian Foundation

Guardians

\$1,000 - \$4,999

Casey Albert T. O'Neil
Foundation
Emerson Process Management
Learning Disabilities
Association of America -
Healthy Children's Project

James G. Lindell Charitable Trust
Primrose School
Gail Fuad
Kim Adams-Kang
John Sweeney
Wallin Foundation

Sponsors

\$250 - \$999

Alliant Techsystems match
Anchor Bank
Jeff Deluca
W. Brooks Donald
Dan Haugen
Sherry Holtz
Lindsay Hopkins
Brian See

Friends

Up to \$249

Anonymous
Pamela Bednar
Comfort Belbas
Joan Bibelhausen
Carol Brumwell
Arty Dorman
Mary Dunn
Echo Township United Fund
Mary Lee Enfield
Bill and Karen Erickson
Connie Freed
Laura Hammagren
Richard & Karla Harris
Kristin Hartley
Karrie Haugen
Carol Hedberg
Clint and Jessica Hooppaw
Mary Beth Horn
Bonita Janda
Mary Beth Kelley
Florence Knox

Wendy Knox
Karen Lee
Ann Longfellow
Evie Losinski
Wendy Madden
Marc Markell
Judy Marthaler
Carol McLean
Medtronic match
Charles Moore
Martha Moriarty
Lois Nash
Jill Pearson-Wood
Sydney Phillips
Mark Prosser
Kathleen Reiter
Kathleen Schuler
Arlene & Ralph Sunday
Kelli Swanson
Thrivent Financial for Lutherans
match
Valley of the Sun United Way
George Walters
Lorajean & Robert Weitnauer
Dominic & Barbara Zweber

In-Kind Donors

ACA International
Anchor Bank
Crosswinds Church
Free the Children
Lori Katz
Landscape Structures
Denise Lee
Lindamood Bell
Minnesota State Fair employees
Osseo Senior High
St. Edwards Episcopal Church
We Day



We apologize if we inadvertently omitted any donor. We deeply appreciate your gift. Please contact us so we can correct our records at 952-582-6000 or info@ldaminnesota.org.